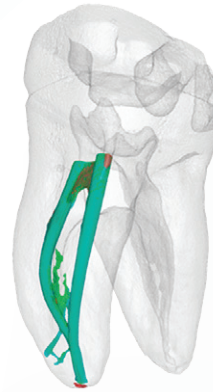
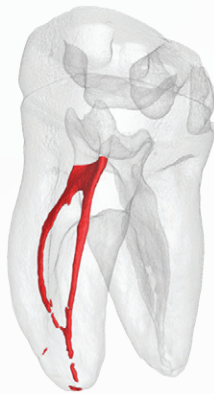




**BRASELER**  
USA®

# REDEFINING ENDODONTICS

BIOCERAMIC TECHNOLOGY



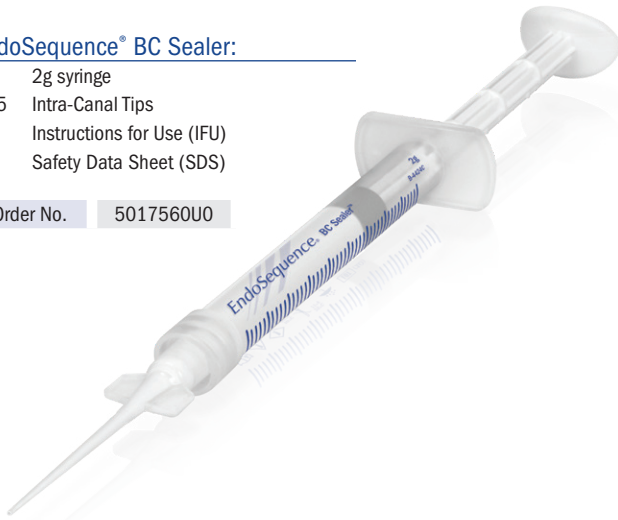
# BC SEALER™

Unlike conventional base/catalyst sealers, BC Sealer utilizes the moisture naturally present in the dentinal tubules to initiate its setting reaction. This highly radiopaque and hydrophilic sealer forms hydroxyapatite upon setting and chemically bonds to both dentin and to our bioceramic points (EndoSequence BC Points). BC Sealer is anti-bacterial during setting due to its highly alkaline pH and unlike traditional sealers, BC Sealer exhibits absolutely zero shrinkage!

## EndoSequence® BC Sealer:

- 1 2g syringe
- 15 Intra-Canal Tips
- 1 Instructions for Use (IFU)
- 1 Safety Data Sheet (SDS)

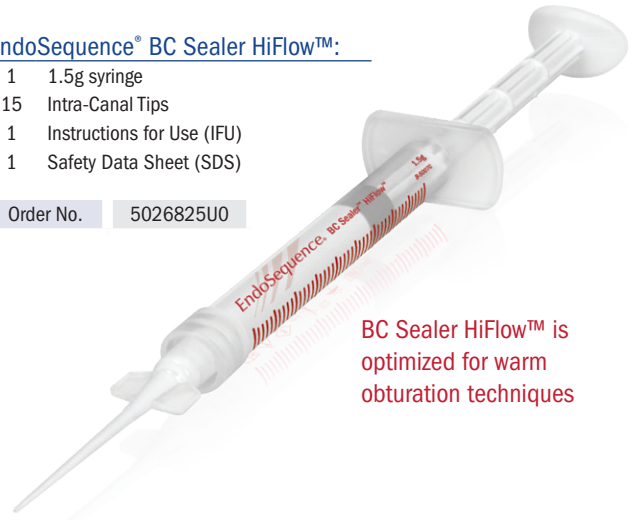
Order No. 5017560U0



## EndoSequence® BC Sealer HiFlow™:

- 1 1.5g syringe
- 15 Intra-Canal Tips
- 1 Instructions for Use (IFU)
- 1 Safety Data Sheet (SDS)

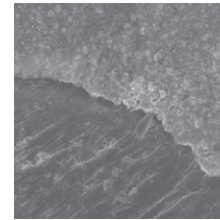
Order No. 5026825U0



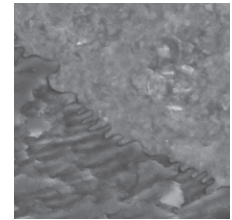
BC Sealer HiFlow™ is optimized for warm obturation techniques

**NEVER BEFORE HAS AN OBTURATION SYSTEM BEEN ABLE TO MAKE THESE CLAIMS.\*  
HOW DOES YOUR CURRENT SYSTEM COMPARE?**

	BC Sealer and Points	Your Current System
Biocompatible and Osteogenic	✓	?
Chemical Bond of Sealer to Dentin	✓	?
Chemical Bond of Sealer to Filling Material	✓	?
Cost Effective (Considerably Less Expensive Than Carriers)	✓	?
Highly Antibacterial (12+ pH upon setting)	✓	?
Highly Radiopaque	✓	?
Hydrophilic	✓	?
Hydroxyapatite Producing	✓	?
Ideal Working and Setting Time	✓	?
User Friendly (Premixed Syringable Sealer)	✓	?
Zero Shrinkage of Sealer and Filling Material	✓	?
3-D Bonded Obturation at Room Temperature	✓	?



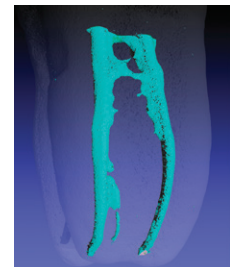
EndoSequence BC Sealer / BC Point Interface



EndoSequence BC Sealer / Dentin Interface



Radiograph courtesy of Dr. Gilberto Debelian, DMD, PhD, Adjunct Associate Professor, Dept of Endodontics at Universities of North Carolina and Pennsylvania



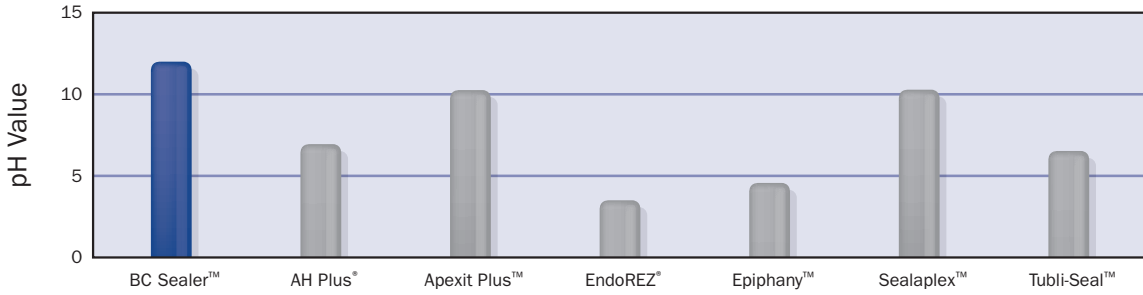
Micro CT Courtesy of Dr. Adam Lloyd, Chair of Department of Endodontics, UTHSC

\*Research and other support materials available at [BrasselerUSADental.com/EndoSequence-Bioactives](http://BrasselerUSADental.com/EndoSequence-Bioactives)

# HIGHLY ANTIBACTERIAL

BC Sealer is alkaline (+12pH) making it highly antibacterial. A recent study showed that BC Sealer killed *Enterococcus faecalis* within 2 minutes of contact.

Antibacterial (pH) Comparison (at 1 day)

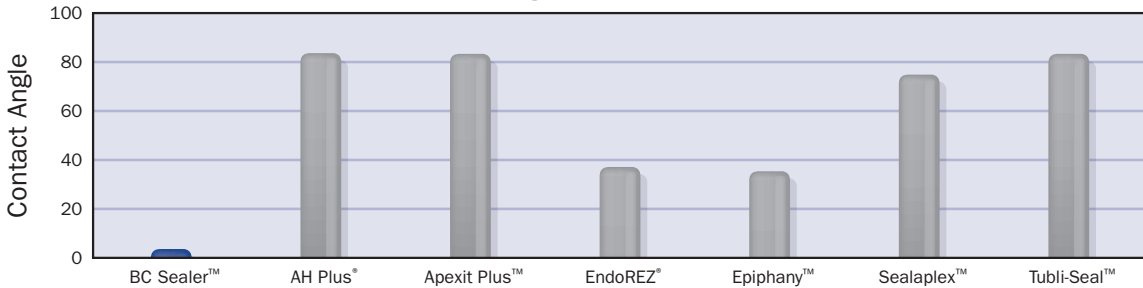


Source:  
Zhang H, Shen Y, Ruse ND, Haapasalo M. Antibacterial activity of endodontic sealers by modified direct contact test against *enterococcus faecalis*. JOE. 2009; 35(7): 1051-5

## EXCELLENT FLOW

BC Sealer's extremely small particle size and hydrophilic nature allow it flow into all aspects of the canal anatomy. A recent study proved that BC Sealer has a contact angle which is lower than all other sealers tested. This unique feature of BC Sealer improves its ability to bond to dentin and obturation materials and also improves its ability to effectively kill microbes throughout all aspects of the root canal system.

Contact Angle Comparison (at 7 days)

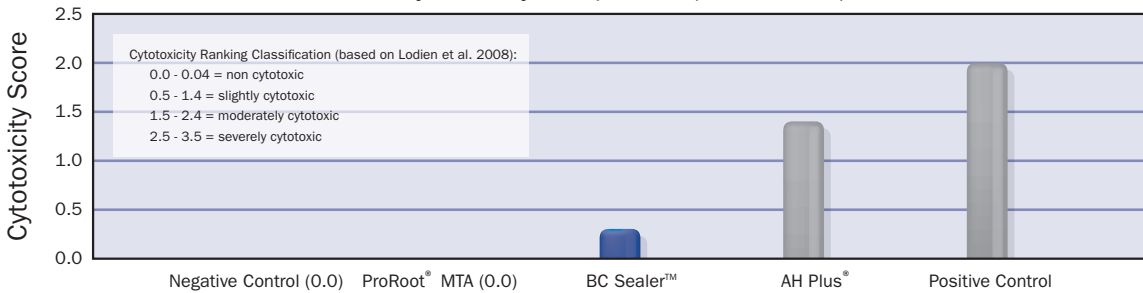


Source:  
Zhang H, Shen Y, Ruse ND, Haapasalo M. Antibacterial activity of endodontic sealers by modified direct contact test against *enterococcus faecalis*. JOE. 2009; 35(7): 1051-5

## SUPERIOR BIOCOMPATIBILITY

BC Sealer is essentially a root repair material with a flowable consistency. The unique osteogenic properties of BC Sealer make it particularly effective on non-vital cases with extensive bone loss or apical periodontitis. A recent study showed BC Sealer to be much more biocompatible than AH Plus®.

Cytotoxicity Comparison (at 24 hours)

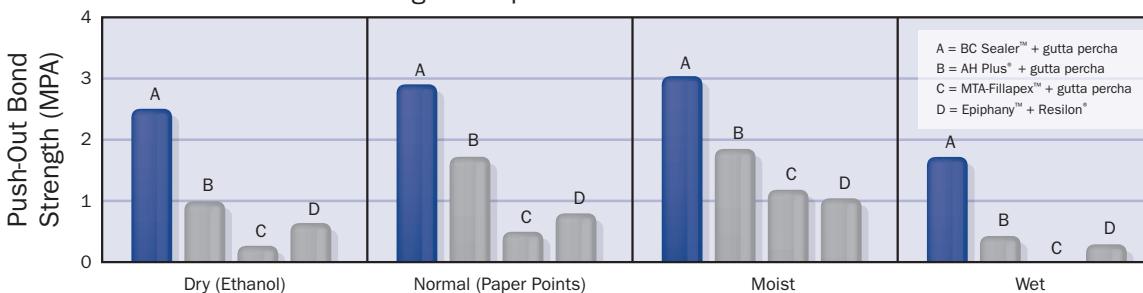


Source:  
Zhang W, Li Z, Peng. Ex vivo cytotoxicity of a new calcium silicate-based canal filling material. International Endodontic Journal. 2010; 43(9): 769. DOI:10.1111/j.1365-2591.2010.01733.

## SUPERIOR BONDING

BC Sealer's hydrophilic/hydroxyapatite producing formula and excellent flowability allow it bond readily to both dentin and to bioceramic filling materials (BC Points™). A recent study showed that BC Sealer has superior bond strength when compared to other popular sealers. The study varied the moisture content to determine its effect on bond strengths. BC Sealer outperformed all the other sealers at all moisture levels.

Bond Strength Comparison in Different Moisture Conditions



Source:  
Nagas E, Uyanik MO, Eymirli A, Cehreli ZC, Vallittu PK, Lassila LVJ, Durmaz V. Dentin moisture conditions affect the adhesion of root canal sealers. JOE. 2011; 38 (2): 240-4

# ENDOSEQUENCE® ROOT REPAIR MATERIAL (RRM™)

TIRED OF HASSLING WITH CONVENTIONAL ROOT REPAIR MATERIALS?

Premixed with Superior Handling and Healing Properties,  
EndoSequence Root Repair Material is Ideal for All Your Root Repair Needs.

EndoSequence® Root Repair Material (RRM™) is available in two specifically formulated consistencies (syringable paste or condensable putty) and contains many of the same characteristics as BC Sealer. The favorable handling properties, increased strength and shortened set time make RRM highly resistant to washout and ideal for all root repair and pulp capping procedures. Research and countless cases confirm that RRM is highly biocompatible and osteogenic. Join the thousands of others that have set aside their spatulas and joined the RRM revolution!

## SUPERIOR HANDLING

- ✓ Premixed-syringable paste or putty consistency
- ✓ Shortened Set Time ~2 hours vs 4+ hours with others
- ✓ Highly Resistant to Washout
- ✓ RRM-Fast Set Putty Shortened Set Time ~20 mins vs 2+ hours with others

## EXCELLENT HEALING

- ✓ Highly Biocompatible
- ✓ Osteogenic
- ✓ Anti-bacterial (+12 pH)

### BC RRM™ Bulk Syringe Kit

Order #5018265U0  
2-1.5g Preloaded Syringes  
15-Intra Canal Tips  
MSDS  
Instructions for Use

### BC RRM™ Fast Set Putty

Order #5024200U0  
1-3g Syringe  
MSDS  
Instructions for Use

### BC RRM™ Intro Syringe

Order #5018264U0  
1-1g Preloaded Syringe  
7-Intra Canal Tips  
MSDS  
Instructions for Use

### BC RRM™ Putty

Order #5018266U0  
1-3g Jar  
MSDS  
Instructions for Use

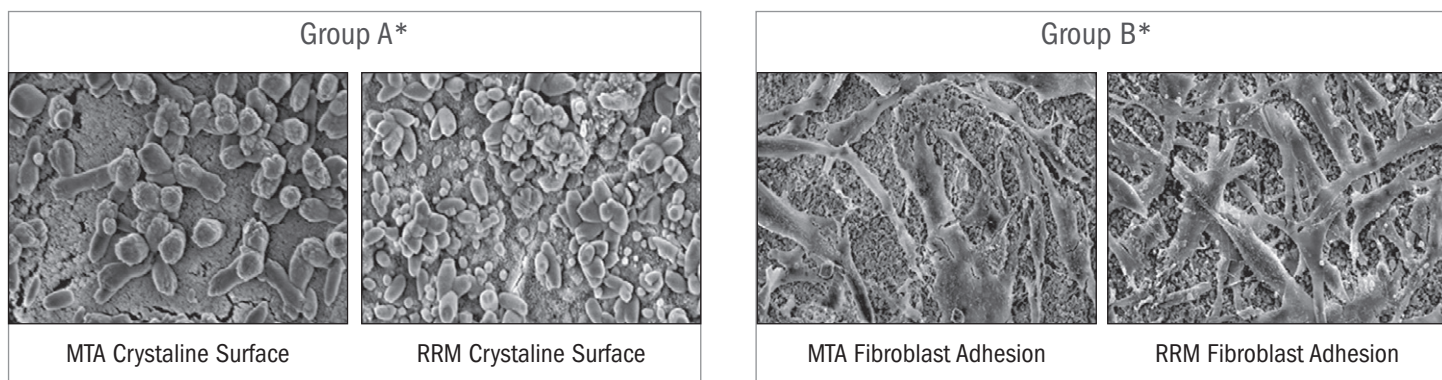


“ Endosequence Root Repair Material’s favorable properties, coupled with it’s ingenious moisture initiated setting reaction and efficient clinical application, represents a step forward in root repair and surgical retrofilling materials. ”

- Dr. Allen Ali Nasseh  
Microsurgical Endodontics, Boston, MA  
Clinical Instructor, Harvard School of Dental Medicine

# BIOACTIVE

The following SEM images illustrate the similarities between MTA and RRM. "Group A" shows the crystalline surfaces of MTA and RRM. Both surfaces are composed primarily of calcium, carbon and oxygen. More notably, "Group B" shows the extent of human gingival fibroblast adhesion to MTA and RRM (after 7 days of incubation). Notice the extensive matrix-like overlay on the surface of the RRM. These SEMs visually confirm that RRM is highly bioactive and efficiently promotes biomineralization.

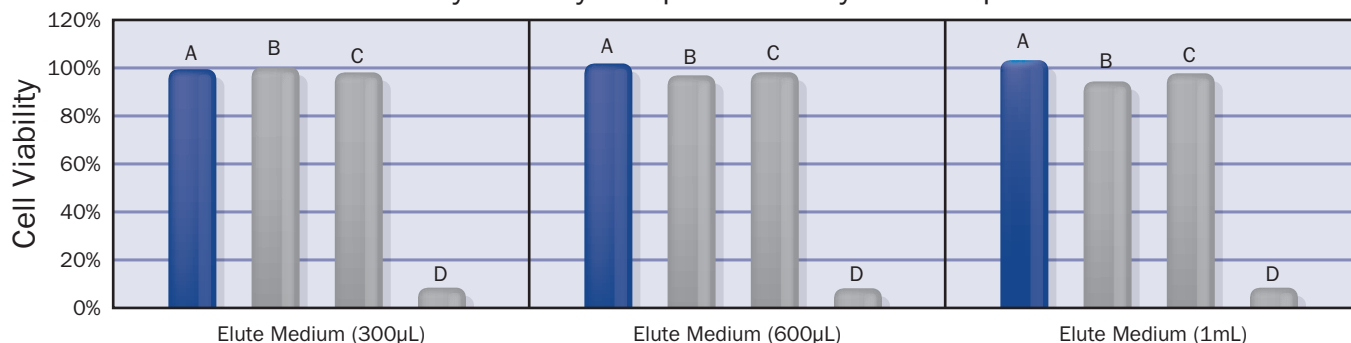


Source: Jingzhi M, Shen Y, Stojicic S, Haapasalo M. Biocompatibility of Two Novel Root Repair Materials. JOE. 2011; 37(6): 793-8

## EXCELLENT BIOCOMPATIBILITY AND MINERALIZATION ABILITY

The following graphs illustrate the biocompatibility and mineralization ability of RRM as compared to other commonly used root repair materials.

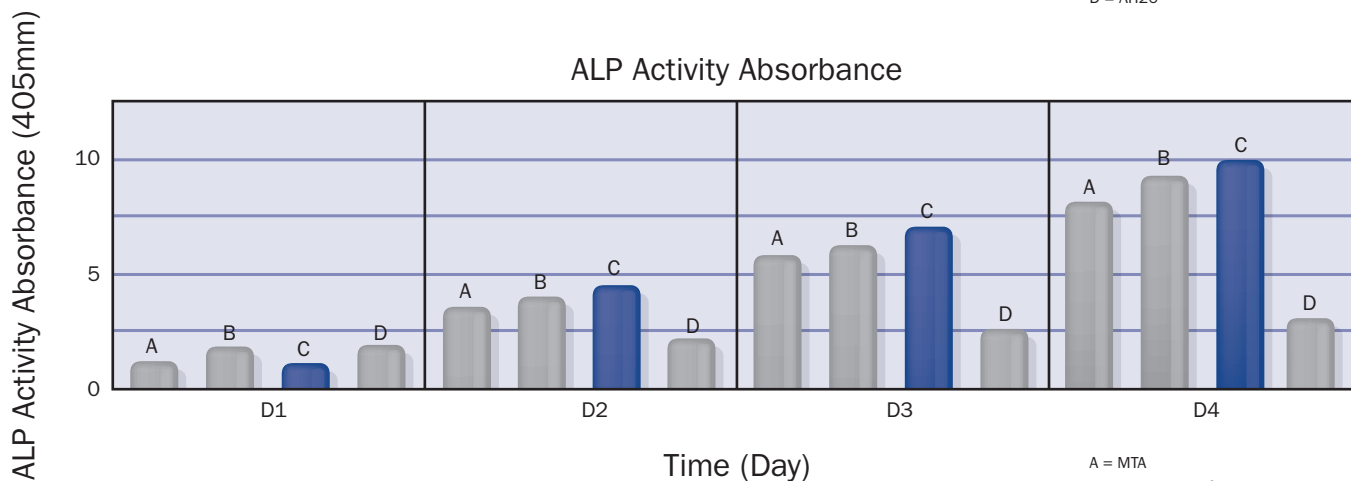
### Cytotoxicity Comparison 3-Day Set Samples



Source: AlAnezi AZ, Jiang J, Safavi KE, Spangberg LSW, Zhu Q. Cytotoxicity evaluation of EndoSequence Root Repair Material. Oral Surgery, Oral Medicine, Oral Pathology, Oral Radiology, and Endodontology. 2010; 109(3): 122-5. DOI:10.1016/j.tripleo.2009.11.028

A = EndoSequence® Root Repair Material  
 B = Gray MTA  
 C = White MTA  
 D = AH26®

### ALP Activity Absorbance



Source: Zhang S., Yang X., Fan M. BioAggregate® and iRoot BP Plus (RRM™ Putty) optimize the proliferation and mineralization ability of human dental pulp cells. International Endodontic Journal. 2013; DOI:10.1111/iej.12082

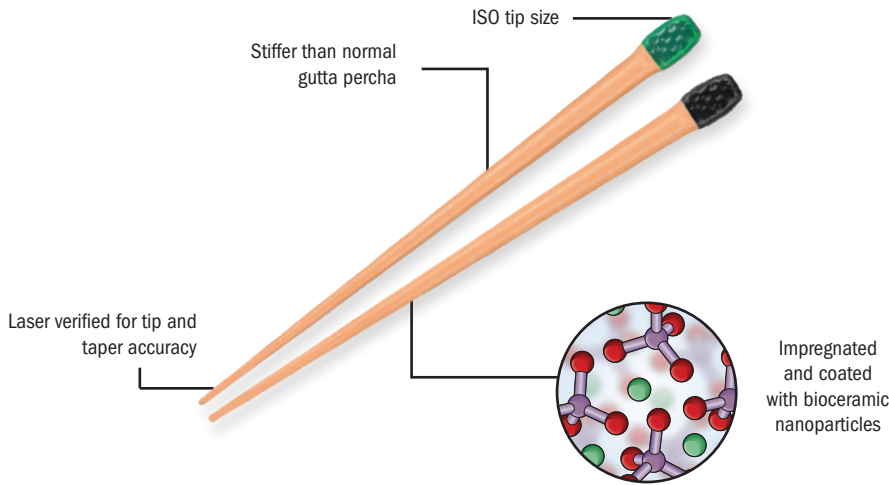
A = MTA  
 B = BioAggregate®  
 C = EndoSequence® RRM™ Putty  
 D = Control

AH Plus®, AH26®, ProRoot® MTA, MTA-Fillapex™, Apexit Plus™, EndoREZ®, Epiphany™, Resilon®, Sealaplex™, BioAggregate® and Tubli-Seal™ are not trademarks of Brasseler USA. EndoSequence®, BC Sealer™, BC Points™, BC Obturation System™ and RRM™ are trademarks of Brasseler USA.

# BC ENDOSEQUENCE<sup>®</sup>

## BC POINTS™, PELLETS™, BC OBTURATION SYSTEM™

Unlike traditional gutta percha, EndoSequence BC Points™ are subjected to a patented, proprietary process of impregnating and coating each cone with bioceramic nanoparticles. This allows for a true chemical (cementation) bond between the sealer and the points. BC Points also undergo a proprietary stiffening process and are laser verified for tip and taper accuracy.



### EndoSequence BC Points™ Individual Packs (60/Pack)

Tip ID	Tip Size	.04 Taper	.06 Taper
○ White	15	5019508U0	5019520U0
● Yellow	20	5019509U0	5019521U0
● Red	25	5019510U0	5019522U0
● Blue	30	5019511U0	5019523U0
● Green	35	5019512U0	5019524U0
● Black	40	5019513U0	5019525U0
○ White	45	5019514U0	5019526U0
● Yellow	50	5019515U0	5019527U0
● Red	55	5019516U0	-
● Blue	60	5019517U0	-
● Green	70	5019518U0	-
● Black	80	5019519U0	-



### EndoSequence BC Points™ 150 Series Individual Packs (60/Pack)\*

Tip ID	Tip Size	.04 Taper
○ White	15	5024583U0
● Yellow	20	5024584U0
● Red	25	5024585U0
● Blue	30	5024586U0
● Green	35	5024587U0
● Black	40	5024588U0
○ White	45	5024589U0
● Yellow	50	5024590U0



### BC Pellets:

100 Pellets

Order No. 5023074U0



### BC Obturation Wheel (.04 Taper):

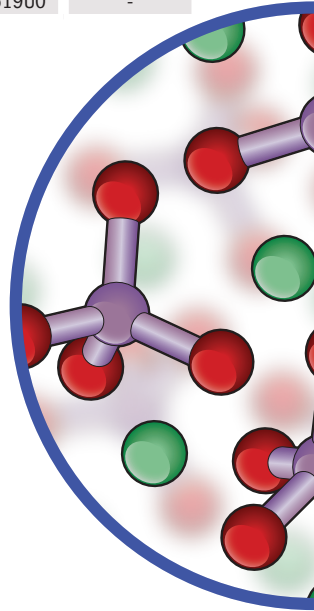
15 ea. (sizes 15-60) BC Points (.04 Taper)  
15 ea. (sizes 15-60) Paper Points (.04 Taper)

Order No. 5019506U0

### BC Obturation Wheel (.06 Taper):

15 ea. (sizes 15-50) BC Points (.06 Taper)  
15 ea. (sizes 15-50) Paper Points (.06 Taper)

Order No. 5019507U0



\*NOTE: The benefit of using BC Sealer™ and BC Points™ is that three-dimensional bonded obturation can be achieved at room temperature. However, if a warm, vertical technique is preferred, then BC Pellets™ should be used at 150°C.

# BIOCERAMIC BONDED OBTURATION

Unlike traditional points, EndoSequence® BC Points™ are subjected to a patented process of impregnating and coating each cone with bioceramic nanoparticles. The bioceramic particles found in BC Sealer bond with the bioceramic particles in BC Points™ to form a true gap-free seal. A recent study showed that BC Sealer, when used in conjunction with our impregnated and coated cones, actually increased the fracture resistance to a level comparable to that of teeth that have not undergone root-canal therapy.



## BC Obturation Kit (.04 Taper):

- 1 BC Sealer
- 15 Intra-Canal Tips
- 1 Assorted BC Points Wheel (.04 Taper)
- 1 Instructions for Use (IFU)
- 1 Material Safety Data Sheet (MSDS)

Order No. 5019504U0

## BC Obturation Kit (.06 Taper):

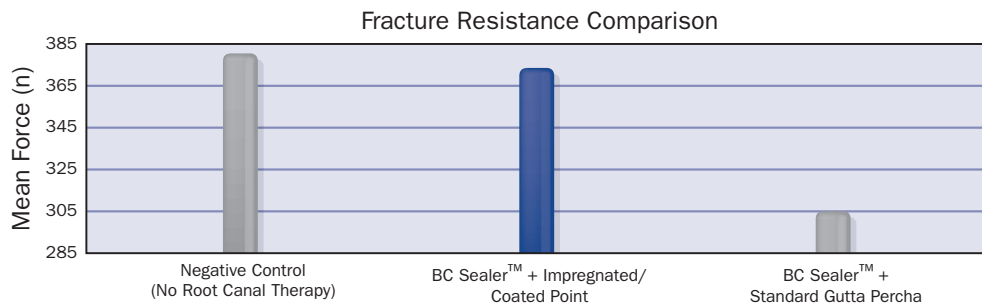
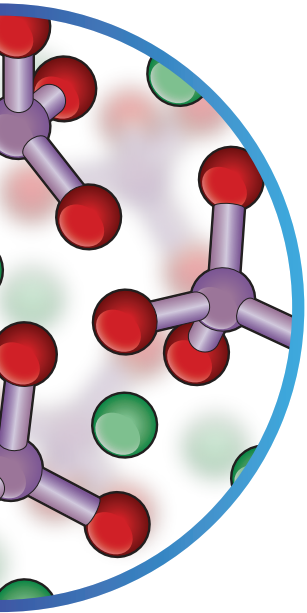
- 1 BC Sealer
- 15 Intra-Canal Tips
- 1 Assorted BC Points Wheel (.06 Taper)
- 1 Instructions for Use (IFU)
- 1 Material Safety Data Sheet (MSDS)

Order No. 5019505U0

“ In all my years of viewing high magnification SEMs, I have never seen a sealer form such a consistently intimate bond with dentin.”

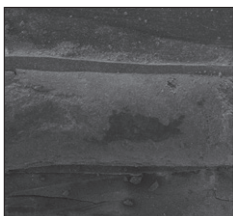
- Dr. Martin Trope

Clinical Professor, University of Pennsylvania

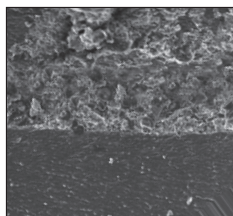


Source: Ghoneim AG, Lutfy RA, Sabet NE, Fayyad DM. Resistance to fracture of roots obturated with novel canal-filling systems. JOE. 2011; 37 (11): 1590-2

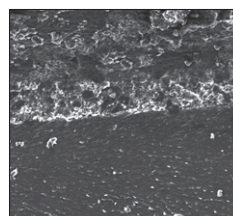
It is universally accepted that microbes require food and space to survive and multiply. Therefore the primary goal of obturation should be to completely fill and seal the entire canal thereby eliminating any gaps (this includes the gap between the sealer and the filling material). The below SEMs visually confirm BC Sealer's unprecedented ability to adapt to the surface of dentin and BC Points™.



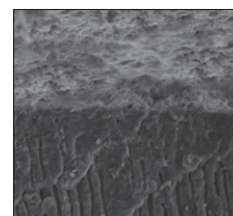
x35 Magnification



x200 Magnification



x350 Magnification



x1000 Magnification

SEMs courtesy of Martin Trope DMD, Clinical Professor, Department of Endodontics, School of Dental Medicine, University of Pennsylvania.

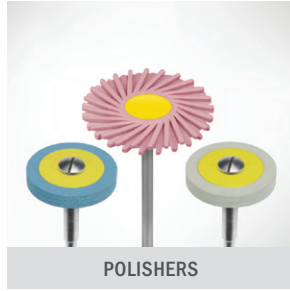
\*BC Points™ are available in individual sizes and in assortment wheels. Standard gutta percha can be used, but for a true, gap-free seal, BC Points™ are recommended. Note: The benefit of using BC Sealer™ and BC Points™ is that three-dimensional bonded obturation can be achieved at room temperature. However, if a warm, vertical technique is preferred, then BC Pellets™ should be used at 150°C.



DIAMONDS



CARBIDES



POLISHERS



PROCEDURE SYSTEMS



BIOCERAMICS



Since 1976, our absolute focus has been to develop products and provide services that support the practice of core operatory procedures. Today, Brasseler USA® is the premier dental instrumentation company in North America offering the most extensive selection of dental and surgical instrumentation under one brand.



HANDPIECES



ENDODONTICS



SMALL EQUIPMENT



HYGIENE



HAND INSTRUMENTS



ORAL SURGERY



LABORATORY INSTRUMENTS



Visit our website at [BrasselerUSA.com](http://BrasselerUSA.com)

To order call 800.841.4522 or fax 888.610.1937. In Canada call 800.363.3838

